

# Recommendations for preventing novel coronavirus infection

## Recommendations for preventing infectious diseases



**Wash your hands with soap and water** especially your palms and under your fingernails



**Cover your mouth with your sleeve when coughing!**



**Wear a mask** when **visiting health facilities with respiratory symptoms** (coughing, etc)



**Inform your travel history to medical staff** when visiting selected clinics and health facilities



Please consult with the **local health center or 1339** if you are suspicious of contracting an infectious disease

\*Selected clinic information: Check KCDC homepage, consult with local health center or area code+120

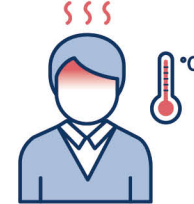
## Recommendations when travelling in China



**Do not touch animals (including poultry)**



**Avoid visiting to local markets and health facilities**



**Do not contact with people who have a fever or respiratory symptoms** (coughing, sore throat, etc.)



- **Wear a mask when coughing**
- **Cover your mouth with your sleeve when coughing**

**Comply with personal hygiene recommendations**



- **Report the health questionnaire upon arrival, after travelling in China**
- **If you have a fever and respiratory symptoms after returning to home**

Please consult with local health center or 1339

## What if he/she is an illegal migrant and he/she is suspected of having a Novel Coronavirus?

Checkup can be carried out without any problems at the local health center regardless of whether he/she is an illegal migrant or not.

All expenses for checkup and medical treatment are free.

He/She will not be forced to leave the country before he/she completely recover.

There is no obligation to notify the immigration office if you visit the local health center because of the infection.

If you have any problems about the medical expenses or the immigration-related matters, due to the infection of the Novel Coronavirus, please contact us at the following telephone number.

- Gyeongnam Migrant Center (055-277-8779)
- Changwon Support Center for Foreign Workers(1899-5002)
- Gimhae Support Center for Foreign Workers(055-338-2727)
- Yangsan Support Center for Foreign Workers(055-912-0255)

# Novel coronavirus infection Prevention dos and don'ts

## Major symptoms

**Fever**

**pneumonia**

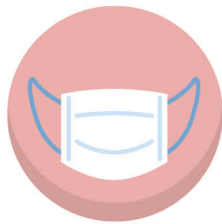
**respiratory symptoms**  
Cough, sore throat, etc.



## Risk factors

**Appearance of symptoms after visiting China**

### If you are traveling to China



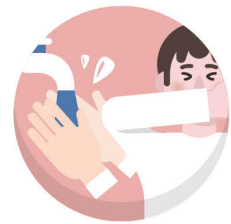
If you experience respiratory symptoms such as cough, **wear a mask** (mandatory when visiting health facilities)



Do not touch **animals** (including poultry)



Avoid contact with **people who have a fever or respiratory symptoms** cough, sore throat, etc.



**Wash hands** in running water for **over 30 seconds** and cover your mouth with your **sleeve** when coughing

### If you experience symptoms\* after visiting China

\*Major symptoms: Pneumonia, fever, respiratory symptoms (cough, sore throat, etc.)



Consult with the local health center or KCDC call center at **1339**



**Wear a mask\***

\*Especially when going out or visiting health facilities



**Inform your travel history** when visiting selected clinics\* and health facilities

\*For more information on selected clinics : Call local Health centers or call at your area code + 120

### What if he/she is an illegal migrant and he/she is suspected of having a Novel Coronavirus?

- 🏢 Checkup can be carried out without any problems at the local health center regardless of whether he/she is an illegal migrant or not.
- 💰 All expenses for checkup and medical treatment are free.
- 📍 He/She will not be forced to leave the country before he/she completely recover.
- ➕ There is no obligation to notify the immigration office if you visit the local health center because of the infection.

If you have any problems about the medical expenses or the immigration-related matters, due to the infection of the Novel Coronavirus, please contact us at the following telephone number.

- Gyeongnam Migrant Center (055-277-8779)
- Changwon Support Center for Foreign Workers(1899-5002)
- Gimhae Support Center for Foreign Workers(055-338-2727)
- Yangsan Support Center for Foreign Workers(055-912-0255)